

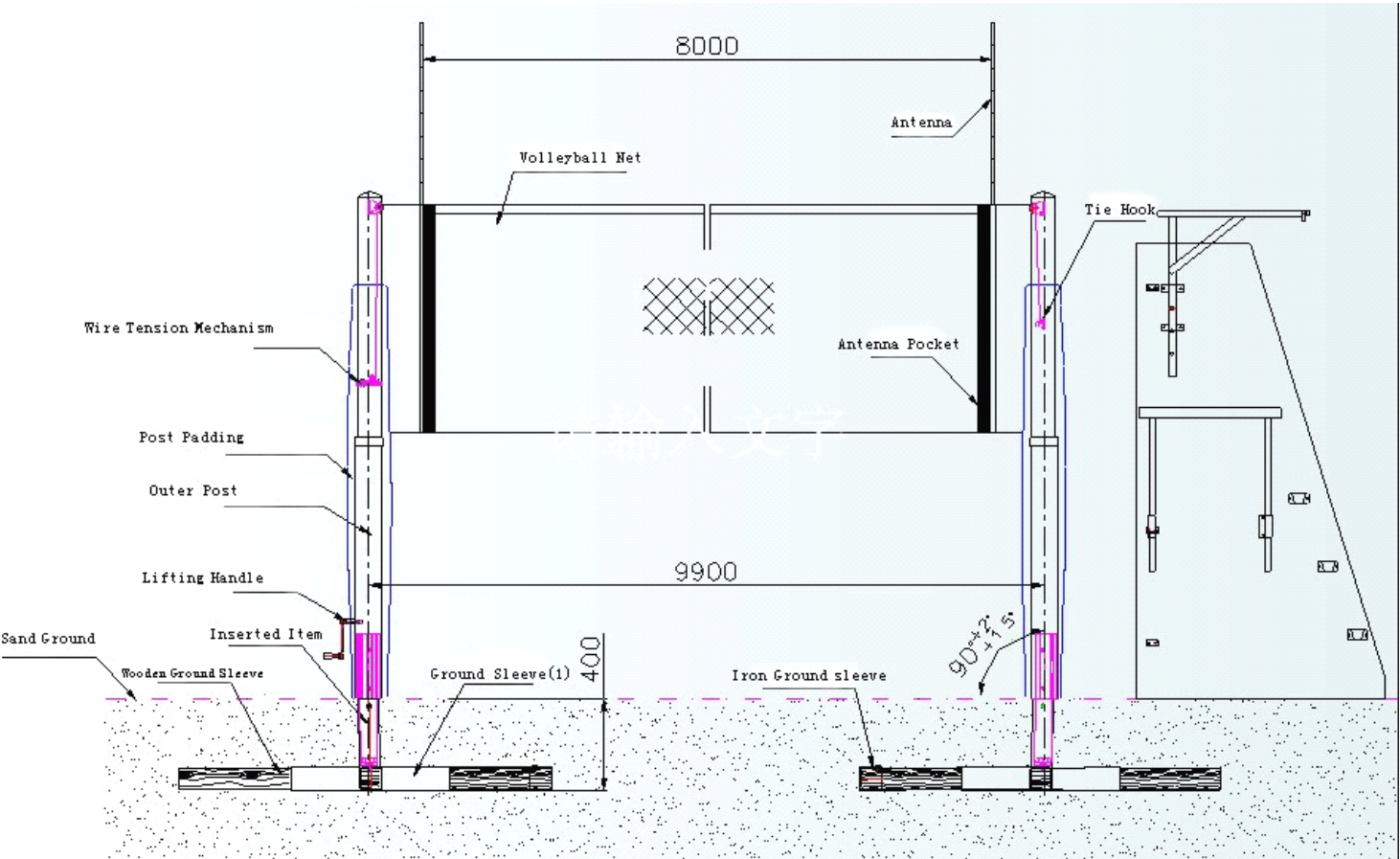


# SPQ-1A Beach Volleyball System

## Instruction **Content**

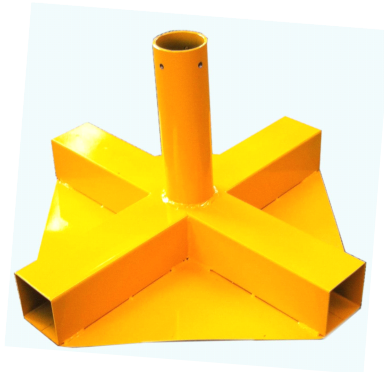
- I Product Components Brief
- II Embedding of Ground Sockets
- III Installation of Beach Volleyball Net
- IV Installation of Antennas
- V Operation of Wire Tension Mechanism
- VI Operation of Referee Chair
- VII Precaution
- VIII Storage and Maintenance

I. Product Components Brief

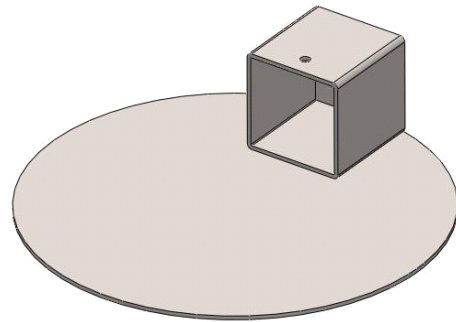


## II. Embedding of Ground Sleeve

### 1. Description about Ground Sleeves



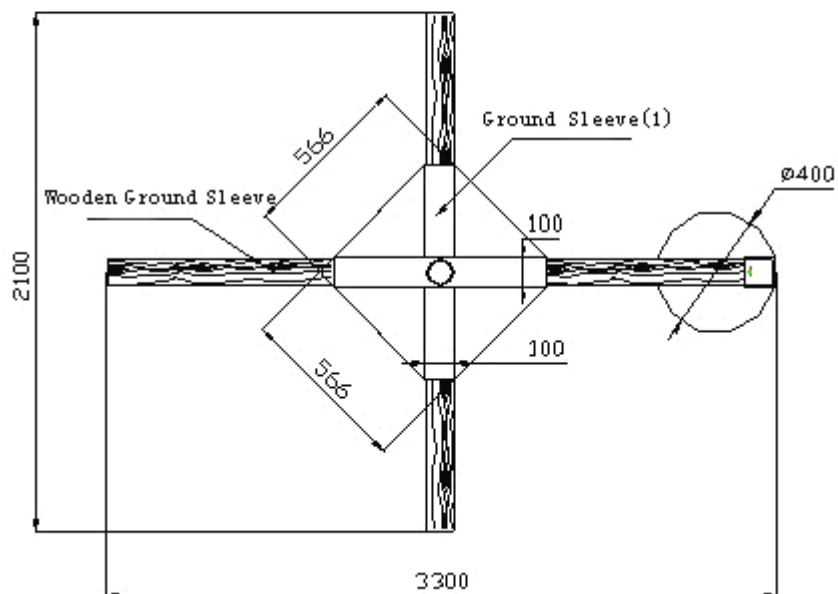
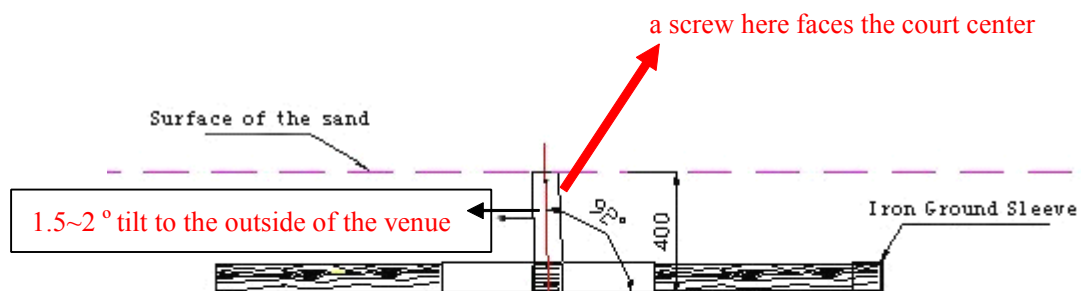
**Ground Sleeve**



**iron ground sleeve**

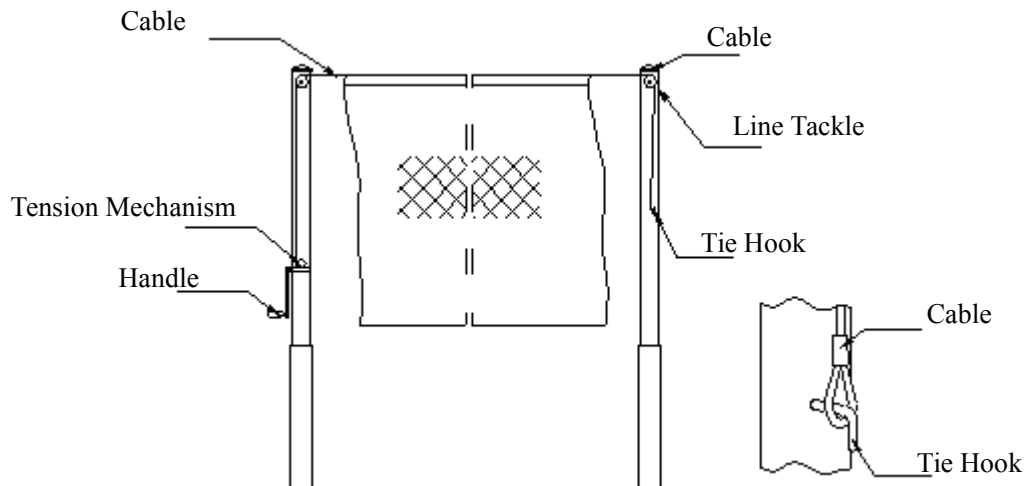
### 2. Embedding of Ground Sleeve

Identify the center of embedding position and the proposed direction on the sand, then find the embedding position based on the center. The embedding depth is 400MM! Detail dimensions are shown as below.

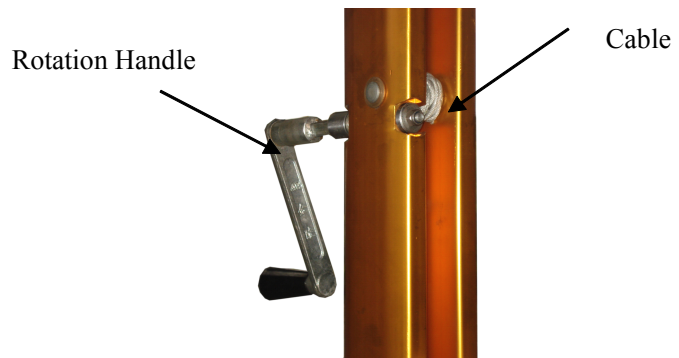
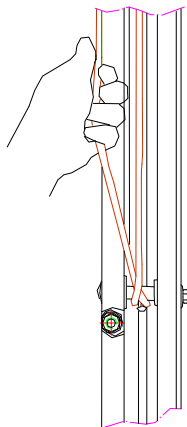


### III. Installation of Beach Volleyball Net

IV. Engage the cable into the line tackle on inner post, and attach the lantern ring to the tie hook .

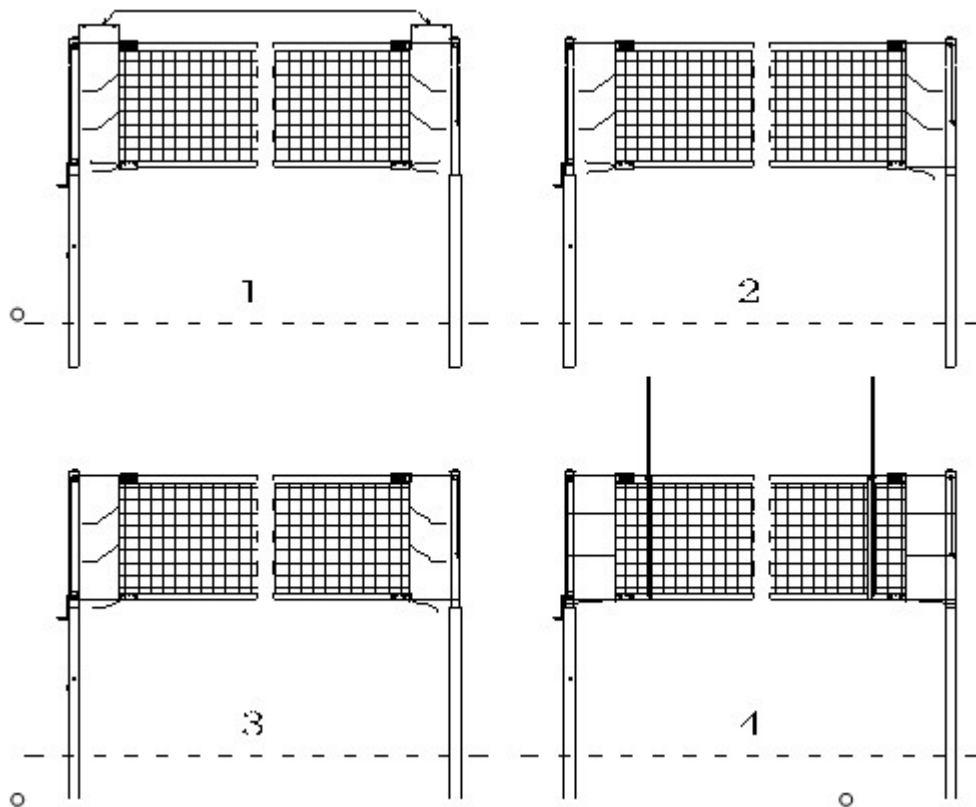


1. Attach the other end of net cable onto another post equipped with wire tension mechanism, with one end of the net wire wrapping attached to the tie hook, hold one end of cable by hand with tension firmly, rotate handle clockwise with the other hand to tension up the wire till both the cable and wire tension mechanism are stably fixed at right position.



2. Rotate the handle of wire tension mechanism clockwise to get top line of the net up to a level as specified for application and both ends of the net having equal distance to the posts. Then, install and tension up the net in steps as shown in the below figure to ensure top line and bottom line of the net are parallel with each other.

Equal distance to both ends



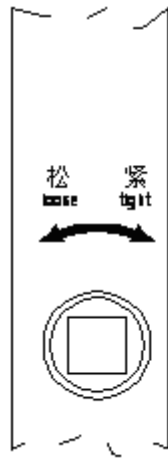
## V. Installation of Antennas

Upon proper installation of the volleyball net, proceed to install 2 antenna pockets and antennas.

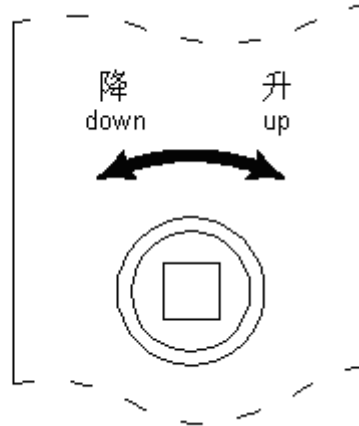
The 2 antenna pockets shall be tied to both ends of the net and made vertical to edge line, while the 2 antennas shall be inserted into the 2 pockets.



## VI. Operation of the wire tension mechanism



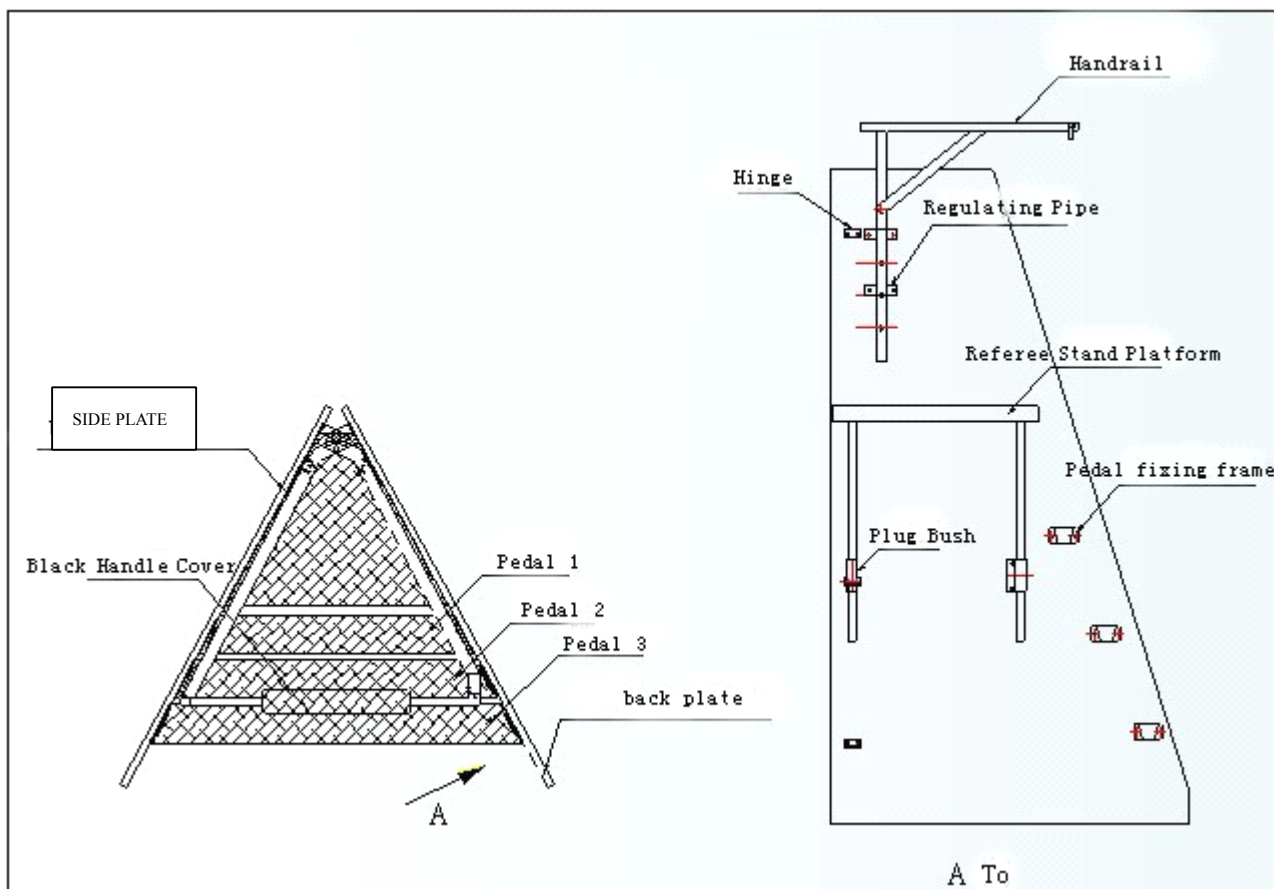
**Wire Tension Mechanism**



**Post lifting up and down**

To get the cable tensioned up, rotate the wire tension mechanism clockwise; to get it disengaged, rotate the wire tension mechanism counterclockwise. In lifting up or down the net with post, rotate the handles on posts at both sides, which will get both posts up or down simultaneously, eventually get the post up or down the height as specified for the game.

## VII. Operation of referee chair



Beach volleyball referee chair consists of the right and left side plate, protective handrail, the referee platform, pedals and so on.

### 1. installment

Erect the two side plates, joint the hinge portion, then adjust the side plate so as to insert the pedals into the pedal frames. Insert the referee platform correspondingly into the sleeve on the side plates. Fix the platform with the bolt. Finally, insert the protective handrail into the regulating pipe, to fix it with the bolt as well.

## VIII. Precaution

1. The beach volleyball posts may be put into operation only after maintenance period of all ground sockets. In case of any loosened parts, get it fixed or repaired in time.
2. Due care shall be paid while moving the beach volleyball posts and referee chair to prevent it from tipping over and damage of surface coating. While lifting down the referee chair, be care not to put hands or foots of you or others under the pedestal to avoid injury.
3. Be safe and mind your hands while installing the steel cable.
4. Inspect connection joints among all parts of the volleyball posts for their tightening status on regular basis, any loosened parts or fixtures shall be tightened or replaced.
5. Use neutral detergent for surface cleaning to avoid damaging protection layer on surface of apparatus.
6. All apparatus shall be stored in area free from exposure to corrosive substances.

## **IX. Storage and Maintenance**

1. Beach volleyball post shall be inspected on regular basis, any loosen fixtures which once found shall be get tighten or replaced immediately.
2. All parts of products in storage shall be protected from collision with heavy objects or objects with sharp edge, scratches or compression damage.
3. If the volleyball post will not be used for a long time, well store it at well ventilated place free from corrosive atmosphere, away from heat source, and protected from humidity, direct exposure to sunshine or rain.
4. Do not disassembly or splice the volleyball post system without prior authorization, any loss, injury or damage resulted from such unauthorized behaviors or actions shall be born the user.

Jiangsu Jinling Sports Equipment Co., Ltd.

Address: No. 8, Changxing Road, Zhangjiagang

Tel: 0512-58688888

Service hotline: 400-886-9233

Post Code: 215628

http: [//www.jlsports.com](http://www.jlsports.com)

E-mail: [info@jlsports.com](mailto:info@jlsports.com)